

FORMWORK & ACCESSORIES

- | Formwork Accessories
- | Precast Consumables
- | Beam Systems & Propping
- | Concrete Chemicals & Grouts



BUILDERS PROPS

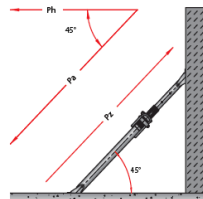
SKU:	SIZE:	WEIGHT:	FORCE RATING:
6140-EP125	1.52m - 2.5m	11.8kg	29.50kN - 20.60kN
6140-EP130	1.82m - 3.0m	13.8kg	29.50kN - 15.75kN
6140-EP135	2.02m - 3.5m	15.0kg	29.50kN - 11.51kN
6140-EP140	2.32m - 4.0m	17.0kg	29.50kN - 8.75kN

- Hand safety system: 10cm free length for operator safety
- Holes punched: Burr-free for lasting functionality
- Inner tube disengagement: Secure handling and transport
- External thread: Rolled for fine adjustment and self-cleaning
- End-plate shapes: Easily identifies prop class



TILT PROPS

SKU:	SIZE:	FORCE PH:	FORCE PA:	FORCE PZ:
TB31 ZG	1.9m - 3.1m	2100kg - 943kg	3000kg - 1333kg	3000kg
TB41 ZG	2.4m - 4.1m	2036kg - 889kg	2880kg - 889kg	3000kg
TB51 ZG	3.1m - 5.1m	1570kg - 566kg	2220kg - 800kg	3000kg



COUPLERS

SKU:	RANGE:
SW48	Swivel 360°
FX48	Fixed 90°
SCAC7648	Coupler 48mm x 76mm



BM48 **Beam Coupling**

PL48 **Put Log**

PROP FORK HEAD

SKU:	SIZE:
V54Z	90mm x 165mm

- 85mm x 170mm internal fork dimensions



SCAFFOLD TUBING

SKU:	SIZE:	OUTSIDE DIA:
GALVPIPE	6.5m	48mm



TILT SLAB PROPPING ANCHOR

SKU:	SIZE:
MKT18107	12mm - 18mm x 107mm
MKT1624130	16mm - 24mm x 130mm



SCAFFOLD JOINERS

SKU:	PRODUCT:
IN48	Internal Sleeve
EX48	External Sleeve

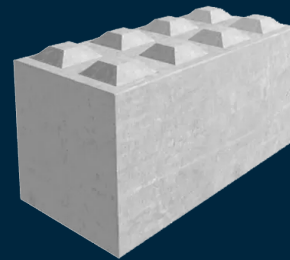
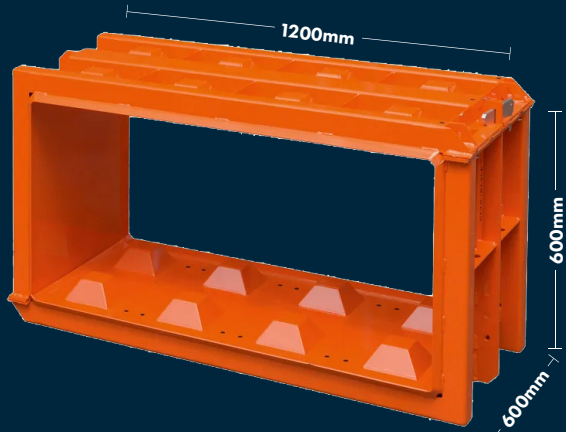


PERSONNEL & SITE SAFETY | SITE SECURITY | TMC SIGNAGE | ENVIRONMENTAL & CIVIL SUPPLIES | FORMWORK & ACCESSORIES | FASTENERS & ADHESIVES | CONCRETE FINISHING | CONCRETE VIBRATORS | GROUT MIX & PUMPING | PLANT & EQUIPMENT | CUTTING, DRILLING & GRINDING | HAND TOOLS | SURFACE PROTECTION | SITE LIGHTING | MATERIALS HANDLING | SITE SIGNAGE

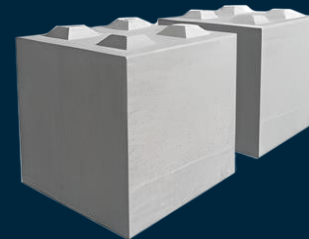
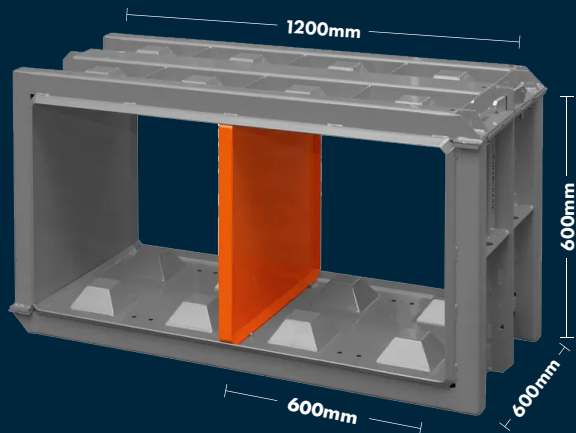
Get SMART and turn your concrete waste into \$\$\$ with

SMARTBLOCK

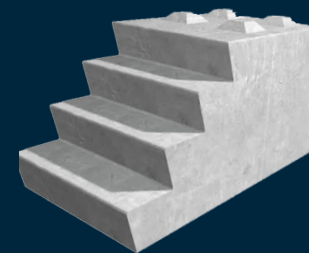
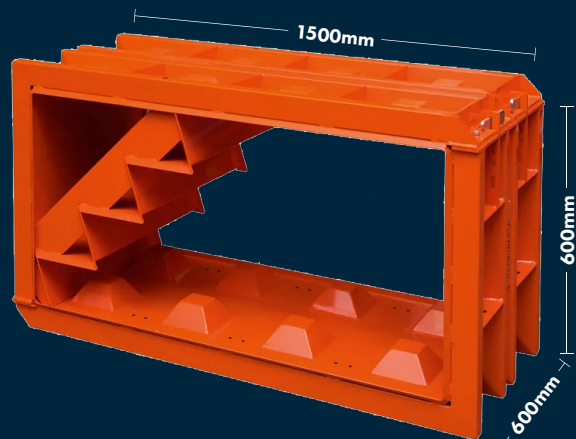
SmartBlock is a Modular Concrete Mould Block Formwork System that allows you to utilise your concrete waste and create long-term product solutions that can be reused many times.



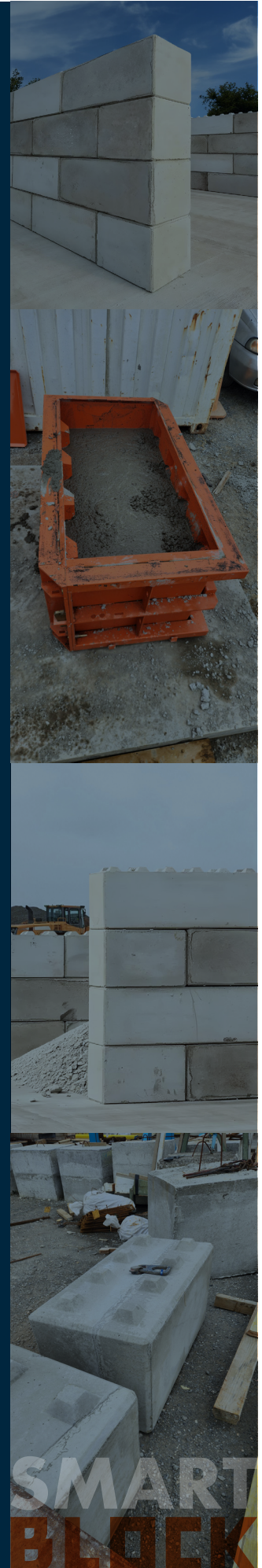
BIG BLOCK
SKU: 6190-120.60.60



MINI BLOCK
SKU: 6190-D60.60



STEP BLOCK
SKU: 6190-150.60.60-S



SMART
BLOCK

I FORMATUBE - CIRCULAR FORMWORK

SKU:	LENGTH:
619-FT300X3	3m x 296mm Ø
619-FT400X3	3m x 406mm Ø
619-FT450X3	3m x 457mm Ø
619-FT500X3	3m x 508mm Ø
619-FT610X3	3m x 610mm Ø

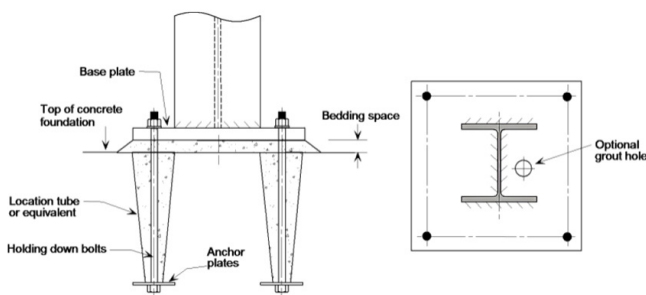
- Ideal for rapidly constructing columns in residential and commercial buildings
- Effective for footings and exposed columns
- Simplifies forming round concrete columns and foundations
- Provides strong support for pier holes in soft ground conditions
- Lightweight cardboard, specifically designed to provide a fast, versatile method of pouring concrete columns
- A one-time use form – no cleaning, oiling
- F3-Grade Finish
- Designed to be poured in a single lift using conventional methods at a pour rate not exceeding 4.5 metres per hour and not in excess of 14 Kpa
- Custom length options available (MOQ applies)



I TAPERED WAX CONE/HOLD DOWN BOLT FORMERS

SKU:	LENGTH:
6193-TWC229	229mm
6193-TWC305	305mm
6193-TWC380	380mm
6193-TWC457	457mm
6193-TWC534	534mm
6193-TWC610	610mm
6193-TWC762	762mm

- Used in the concrete construction industry for forming hold down bolt voids
- Allows minor adjustment to hold down bolts to match precise column base plate detailing
- Wax coating to ensure easy removal



PERSONNEL & SITE SAFETY
SITE SECURITY
TMC SIGNAGE
ENVIRONMENTAL & CIVIL SUPPLIES
FORMWORK & ACCESSORIES
FASTENERS & ADHESIVES
CONCRETE FINISHING
CONCRETE VIBRATORS
GROUT MIX & PUMPING
PLANT & EQUIPMENT
CUTTING, DRILLING & GRINDING
HAND TOOLS
SURFACE PROTECTION
SITE LIGHTING
MATERIALS HANDLING
SITE SIGNAGE

HARDWOOD FORMPLY ECONOFORM

SKU:	SIZE:
6190-FP241209	2.40m x 1.20m x 9mm
6190-FP241218	2.44m x 1.22m x 18mm
6190-FP241225	2.44m x 1.22m x 25mm

- Manufactured from hardwood veneer in a multi laminate panel overlaid with a high density resin film
- Suitable for multiple re-uses not requiring the highest quality concrete finish
- The multi-ply construction provides increased strength and stability
- Dark brown phenol film 120g/m² finish
- Hardwood non-durable
- Exterior glue bond



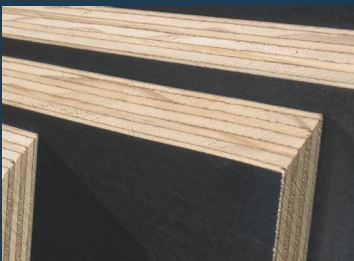
Available in stock



FORMPLY - F17 GRADE PROFORM

SKU:	SIZE:
6190-FPF171812	1.8m x 1.2m x 17mm
6190-FPF172412	2.4m x 1.2m x 17mm

- Cross-laminated construction resists expansion and contraction from rain and temperature changes
- Suits a range of frame spacings, concrete slab thicknesses and surface tolerances
- Compatible with steel or timber form frame systems
- Glued with phenol formaldehyde resin and overlaid with a hard, durable resin-impregnated paper for a smooth concrete finish
- Durable A-Type Marine bond withstands construction moisture



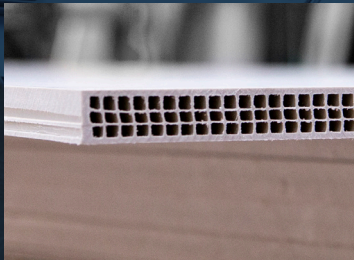
Available in stock



COMPOSITE FORMPLY

SKU: 6193-CFP241218 SIZE: 2.44m x 1.22m x 18mm

- 100% recyclable
- Impervious to moisture
- Will not warp/shrink
- 28kg sheet weight
- Can be drilled, nailed, glued
- Smooth, durable surface
- Withstands pressure washing to remove concrete residue
- Up to 60 times usage



Available in stock



UNTREATED PLYWOOD DD & CD

SKU:	SIZE:
6190-DDUT7	2.4m x 1.2m x 7mm
6190-DDUT9	2.4m x 1.2m x 9mm
6190-DDUT12	2.4m x 1.2m x 12mm
6190-DDUT25	2.4m x 1.2m x 25mm
6190-DDUT32	2.4m x 1.2m x 32mm
6190-CDUT7	2.4m x 1.2m x 7mm
6190-CDUT9	2.4m x 1.2m x 9mm
6190-CDUT18	2.4m x 1.2m x 18mm



PERSONNEL & SITE SAFETY
SITE SECURITY
TIMC SIGNAGE
ENVIRONMENTAL & CIVIL SUPPLIES
FORMWORK & ACCESSORIES
FASTENERS & ADHESIVES
CONCRETE FINISHING
CONCRETE VIBRATORS
GROUT MIX & PUMPING
PLANT & EQUIPMENT
CUTTING, DRILLING & GRINDING
HAND TOOLS
SURFACE PROTECTION
SITE LIGHTING
MATERIALS HANDLING
SITE SIGNAGE

I LVL EDGE FORM

SKU:	SIZE:
6196-LVL1003660	100mm x 36mm x 6m
6196-LVL1503660	150mm x 36mm x 6m
6196-LVL2003660	200mm x 36mm x 6m
6196-LVL3003660	300mm x 36mm x 6m
6196-LVL4003660	400mm x 36mm x 6m



I LVL FORMWORK TIMBER

SKU:	SIZE:
6196-LVL954760	95mm x 47mm x 6m
6196-LVL956560	95mm x 65mm x 6m
6196-LVL1507758	150mm x 77mm x 5.8m



I FORMWORK & BOXING TIMBER

FRAMING TIMBER H1.2

SKU:	SIZE:	QTY:
6193-9045SG8	90mm x 45mm	Per metre
6193-14045SG8	140mm x 45mm	Per metre
6193-19045SG8	190mm x 45mm	Per metre

BOXING TIMBER UT KD MG

SKU:	SIZE:	QTY:
6193-9045UT	90mm x 45mm	Per metre



I GTX BEAM

SKU:	SIZE:
6193-GTX15068	150mm x 68mm x 6m

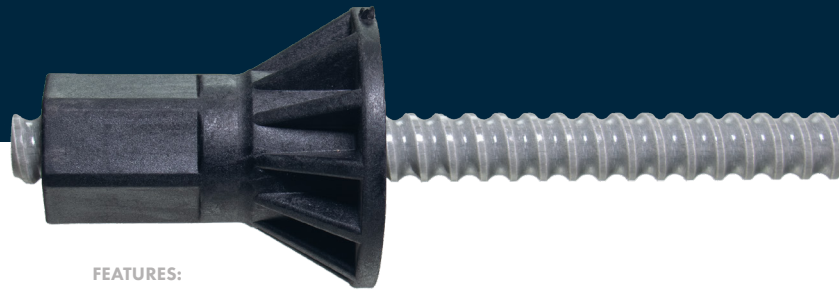


GFRP FORM TIES



GFRP Form Ties are made from glass fibre-reinforced polymer composites. Pultron reinvented the traditional tie and nut system and integrated a GFRP tie rod for stronger corrosion resistance, a faster cutting process, easier transportation and many other advantages.

Engineered to provide long-lasting benefits, GFRP Form Ties maintain structural integrity, whilst minimising environmental impact, making them a suitable solution for sustainable construction projects.



TIE ROD

SKU:	6193-GFRPR
SIZE (DIAMETER):	16mm
NUT STRENGTH AVERAGE:	65kN
NUT STRENGTH GUARANTEED:	55kN
SHEAR STRENGTH AVERAGE:	45kN
SHEAR STRENGTH GUARANTEED:	40kN

NUT

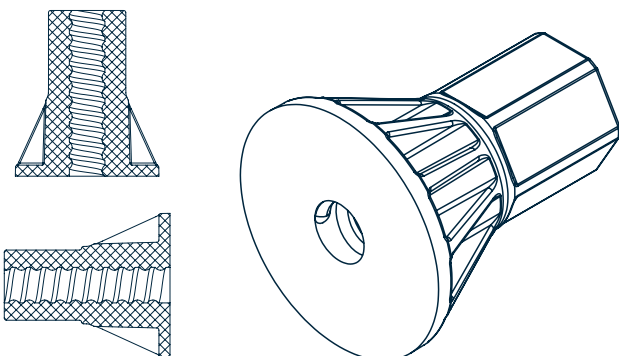
SKU:	6193-GFRPTN
LENGTH:	75mm
DIAMETER OF WASHER FACE:	65mm
HEX SIZE FOR SPANNER:	32mm / 1 1/4"

FEATURES:

- Corrosion-resistance
- High durability
- Easy to cut
- 1/4 the weight of steel
- High moisture absorption resistance
- Excellent thermal insulation
- Thread profile strength
- Suitable for use with all concrete grades
- Reusable fastening nut

APPLICATIONS:

- Conventional formwork
- Single-sided formwork
- Dams
- Water tanks
- Wastewater treatment plants
- Columns
- Architectural work



Call us **0800 23 57 89** or Email sales@powerpac.co.nz

PERSONNEL & SITE SAFETY | SITE SECURITY | TM/C SIGNAGE | ENVIRONMENTAL & CIVIL SUPPLIES | **FORMWORK & ACCESSORIES** | FASTENERS & ADHESIVES | CONCRETE FINISHING | CONCRETE VIBRATORS | GROUT MIX & PUMPING | PLANT & EQUIPMENT | CUTTING, DRILLING & GRINDING | HAND TOOLS | SURFACE PROTECTION | SITE LIGHTING | MATERIALS HANDLING | SITE SIGNAGE


I GROUND CHAIRS

SKU:	BAR (H):	QTY:	
G25/40	25mm	100pk	
G50/65	50mm	100pk	
G75/90	75mm	100pk	
G85/100	85mm	50pk	
G150/160	150mm	50pk	
G150/160NB	150mm	50pk	
6192-G85/100	85mm	100pk	
6192-BSOG100	100mm	100pk	
6192-BSOG110	110mm	100pk	
6192-BSOG120	120mm	100pk	

I SMART CLIP MESH CHAIRS

SKU:	BAR (H):	MESH (H):	QTY:	
SC50	50mm	50mm	100pk	
SC75	75mm	75mm	100pk	









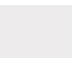
I PRECAST BAR CHAIRS

SKU:	BAR (H):	MESH (H):	QTY:	
PC25/40	25mm	40mm	200pk	
PC50/60	50mm	60mm	100pk	
PC65/75	65mm	75mm	100pk	

I FAST CLIP BAR CHAIRS

SKU:	BAR (H):	QTY:	
FCB20	20mm	100pk	
FCB25	25mm	100pk	
FCB30	30mm	100pk	
FCB35	35mm	100pk	
FCB40	40mm	100pk	
FCB50	50mm	100pk	
FCB75	175mm	100pk	
SUIT 20 - 36mm BAR			
FCBP30	30mm	100pk	
FCBP40	40mm	100pk	


I TIE BAR ACCESSORIES

SKU:	PRODUCT:	SIZE:	QTY:	
6193-WSJ	Waterstop Joiner	15mm Bar	1	
6193-TRN15	Tie Bar Nut	15mm Bar	1	
6193-TR153000	Tie Bar	15mm	3m length	
6193-TBJ15100	Z Bar Joiner	-	100mm length	
6193-ZFP121210	Z Bar Flange Plate	120mm x 120mm x 10mm, 20mm hole	1	
6193-ZBP1020	Z Bar Plate (Zinc)	100mm x 125mm x 10mm	20 per box	
6193-ZBWN15	Z Bar Wing Nut	-	1	
6193-ZBN140	Z Bar Single Arm Nut	17mm	40 per box	
6193-TRPN	Pivot Plate Nut for Tie Bar	15mm Bar	1	

I CONCRETE SPACERS

SKU:	PRODUCT:	COVER:	QTY:	
6192-CSAS50	Single Cover	50mm	100pk	
6192-CSAS60	Single Cover	60mm	100pk	
6192-CSAS75	Single Cover	75mm	100pk	
6192-CSAS100	Single Cover	100mm	50pk	
6192-CSAK30	Fast Clip	30mm	250pk	
6192-CSAK40	Fast Clip	40mm	200pk	
6192-CSAK50	Fast Clip	50mm	150pk	
6192-CSAH50	Single Cover - High Load	50mm	50pk	
6192-CSAH60	Single Cover - High Load	60mm	50pk	
6192-CSAH75	Single Cover - High Load	75mm	25pk	
6192-AS3550	Concrete Multi Spacer	35, 40, 45, 50mm	200pk	
6192-AS2025	Concrete Multi Spacer	20, 25mm	200pk	

I CONCRETE SPACER BAR

SKU:	SIZE:	
6192-CSB755090	900mm L x 75mm W x 50mm H	
	<ul style="list-style-type: none"> 130pk per pallet Chemical composition: Mix of OPC, GBS, GGBS, fibres and additives 	

I CONDUIT & FORMWORK CONES

SKU:	PRODUCT:	SIZE:	QTY:
6193-C20	20mm Conduit	18mm ID	4m L
6193-CC20	Conduit Cone	20mm	100pk



PERSONNEL & SITE SAFETY
SITE SECURITY
TTCM SIGNAGE
ENVIRONMENTAL & CIVIL SUPPLIES
FORMWORK & ACCESSORIES
FASTENERS & ADHESIVES
CONCRETE FINISHING
CONCRETE VIBRATORS
GROUT MIX & PUMPING
PLANT & EQUIPMENT
CUTTING, DRILLING & GRINDING
HAND TOOLS
SURFACE PROTECTION
SITE LIGHTING
MATERIALS HANDLING

I DROSSBACH STEEL DUCTING

SKU:	INTERNAL DIAMETER:
DB3035	30mm
DB4045	40mm
DB4550	45mm
DB5055	50mm
DB5560	55mm
DB6065	60mm
DB6570	65mm
DB7075	70mm
DB7580	75mm
DB8085	80mm
DB8590	85mm
DB9095	90mm
DB100105	100mm
DB110115	110mm
DB120125	120mm
DB130135	130mm
DB150155	150mm

- Supplied cut to length
- Pre-drilling option on request



I GROUT NIPPLE & WASHER

SKU: 6194-GN



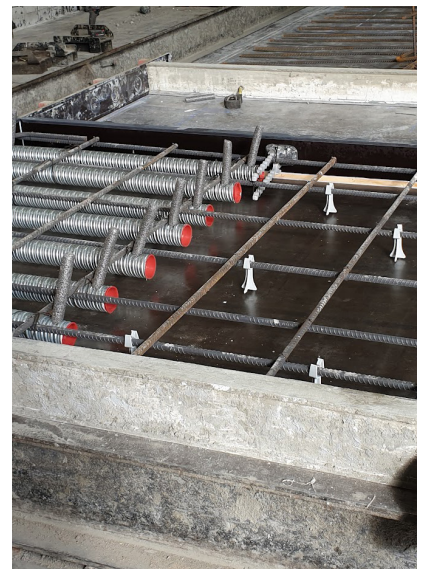
I PVC TUBING CLEAR

SKU:	SIZE:
6194-NTC130E-ROLL	13mm x 50m Roll
6194-NTC13-M	Per metre



I DROSSBACH END CAPS

SKU:	TO SUIT DUCTING SIZE:
DBC40	40mm
DBC45	45mm
DBC50	50mm
DBC55	55mm
DBC60	60mm
DBC65	65mm
DBC70	70mm
DBC75	75mm
DBC80	80mm
DBC90	90mm
DBC100	100mm
DBC110	110mm
DBC130	130mm
DBC150	150mm

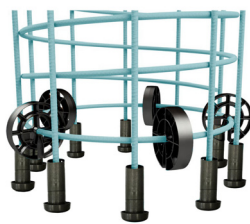
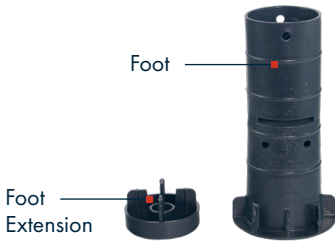


PERSONNEL & SITE SAFETY
SITE SECURITY
TMC SIGNAGE
ENVIRONMENTAL & CIVIL SUPPLIES
FORMWORK & ACCESSORIES
FASTENERS & ADHESIVES
CONCRETE FINISHING
CONCRETE VIBRATORS
GROUT MIX & PUMPING
PLANT & EQUIPMENT
CUTTING, DRILLING & GRINDING
HAND TOOLS
SURFACE PROTECTION
SITE LIGHTING
MATERIALS HANDLING
SITE SIGNAGE

I PILE CAGE FOOT

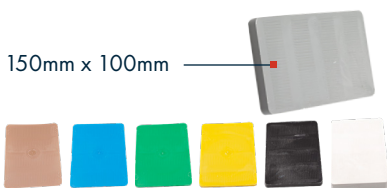
SKU:	TYPE:	QTY:
6192-PCF40085	Foot	60pk
6192-PCF40100	Foot Extension	60pk

- Reo: 20mm - 40mm
- Spacer length: 100mm



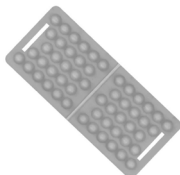
I LEVELLING SHIMS

SKU:	FINISH:	QTY:
SHIM01L	1mm Brown	200pk
SHIM02L	2mm Blue	200pk
SHIM03L	3mm Green	100pk
SHIM05L	5mm Yellow	100pk
SHIM10L	10mm Black	40pk
SHIM15L	15mm Grey	40pk
SHIM20L	20mm White	30pk



I PRECAST PANEL PAD

SKU:	QTY:
CPAD	100pk



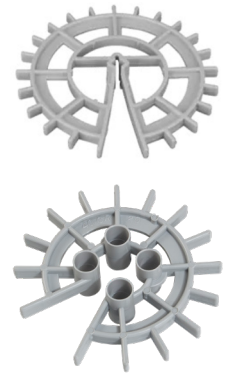
I GROUND CRACK INDUCER

SKU:	SIZE:
6193-GCI25300	25mm - 3m
6193-GCI53300	50mm - 3m



I CIRCULAR SPACERS

SKU:	REBAR SIZE:	COVER:	QTY:
6192-CS15410	4mm - 10mm	15mm	1000pk
6192-CS20516	5mm - 16mm	20mm	500pk
6192-CS25516	5mm - 16mm	25mm	500pk
6192-CS30418	4mm - 18mm	30mm	500pk
6192-CS35516	5mm - 16mm	35mm	250pk
6192-CS50516	5mm - 16mm	50mm	100pk
6192-CS40812	8mm - 12mm	40mm	100pk
6192-CS50812	8mm - 12mm	50mm	100pk
6192-CS65812	8mm - 12mm	65mm	100pk
6192-CS75812	8mm - 12mm	75mm	100pk
6192-CS401620	16mm - 20mm	40mm	100pk



I PILE CAGE SPACERS

SKU:	WIRE SIZE:	SIZE:	QTY:
6192-HDS6520	10mm - 20mm	65mm	40pk
6192-HDS5020	12mm - 20mm	50mm	30pk
6192-HDS7520	12mm - 20mm	75mm	30pk
6192-HDS10020	10mm - 20mm	100mm	10pk



I PRECAST MAGNETS & FORMWORK CLAMP

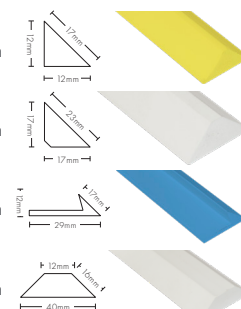
SKU:	PRODUCT:	FORCE:
GME-900	Magnet	900kg
GME-PB	Prybar	-

SKU:	PRODUCT:	SIZE:
GME-900C	Clamp	280mm x 60mm x 40mm



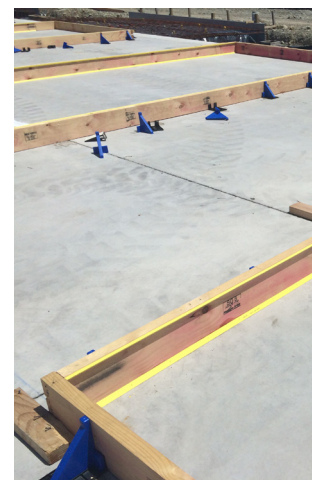
I FORMWORK FILLETS & CHAMFERS

SKU:	SHAPE:	LENGTH:
FFB-121217	Corner	2.9m
FFA-171723	Corner	2.9m
FFWF-2912	Chamfer	2.9m
FEJA-401216	Joint	2.9m



FORM FILLET SHEARS

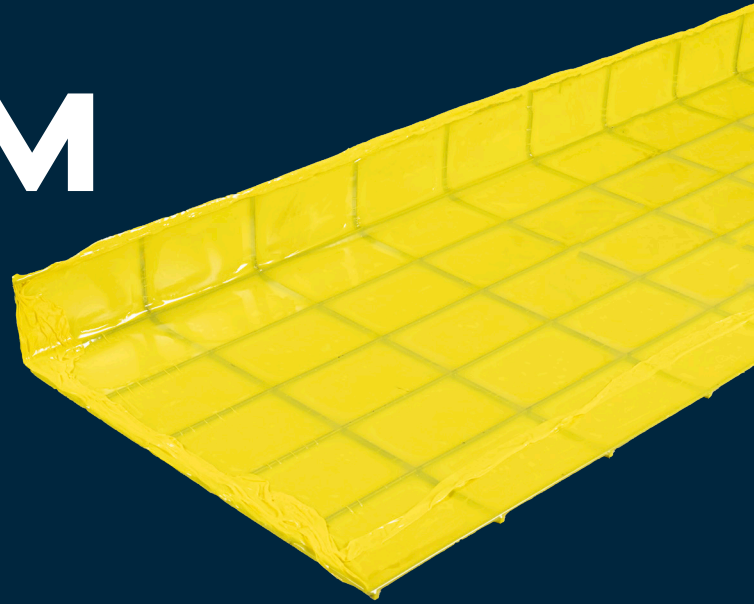
SKU:
FF-CUTTER



PERSONNEL & SITE SAFETY
SITE SECURITY
TTCM SIGNAGE
ENVIRONMENTAL & CIVIL SUPPLIES
FORMWORK & ACCESSORIES
FASTENERS & ADHESIVES
CONCRETE FINISHING
CONCRETE VIBRATORS
GROUT MIX & PUMPING
PLANT & EQUIPMENT
CUTTING, DRILLING & GRINDING
HAND TOOLS
SURFACE PROTECTION
SITE LIGHTING
MATERIALS HANDLING
SITE SIGNAGE

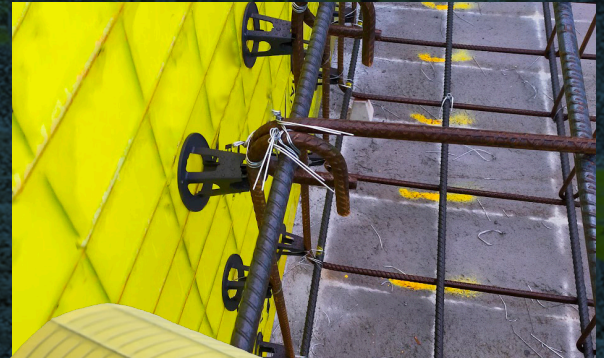
SMARTFORM

SKU:	WIDTH:	LENGTH:
6193-SF45225	450mm	2.25m
6193-SF60225	600mm	2.25m
6193-SF75225	750mm	2.25m
6193-SF90225	900mm	2.25m
6193-SF120225	1.2m	2.25m
6193-SF150225	1.5m	2.25m
6193-SF180225	1.8m	2.25m
6193-SF240225	2.4m	2.25m
6193-SF245225	2.45m	2.25m



Sacrificial Formwork:

- We offer a range of standard panels and forms for virtually all applications
- Saves time and costs on blinding, labour, and spoil removal
- Curved or complicated foundation forms can easily be produced on-site
- No stripping, cleaning, or return of the formwork
- Light enough for just one person to handle. No need for hoists; ready for rapid assembly
- Fast and easy to install; can be cut with basic tools
- Re-use your SmartForm forms, depending on the specific conditions and construction method; no waste
- We supply directly to site, preformed and bent to your requirements



Talk to our team of experts to determine the appropriate size for your next project.

Call us **0800 23 57 89**



SmartForm and SmartRib brought to you by

POWERPAC
Solutions Delivered Fast

- **Rapid Install & Build Time**
- **Supplied in Modular & Pre-formed Profiles**
- **Reduced Cost & Labour**

SMART RIB

SKU:

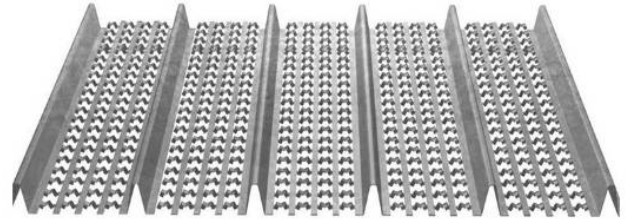
6193-SRSE

SIZE SHEET:

450mm x 2.25m

THICKNESS:

4mm



- **Available in stock**



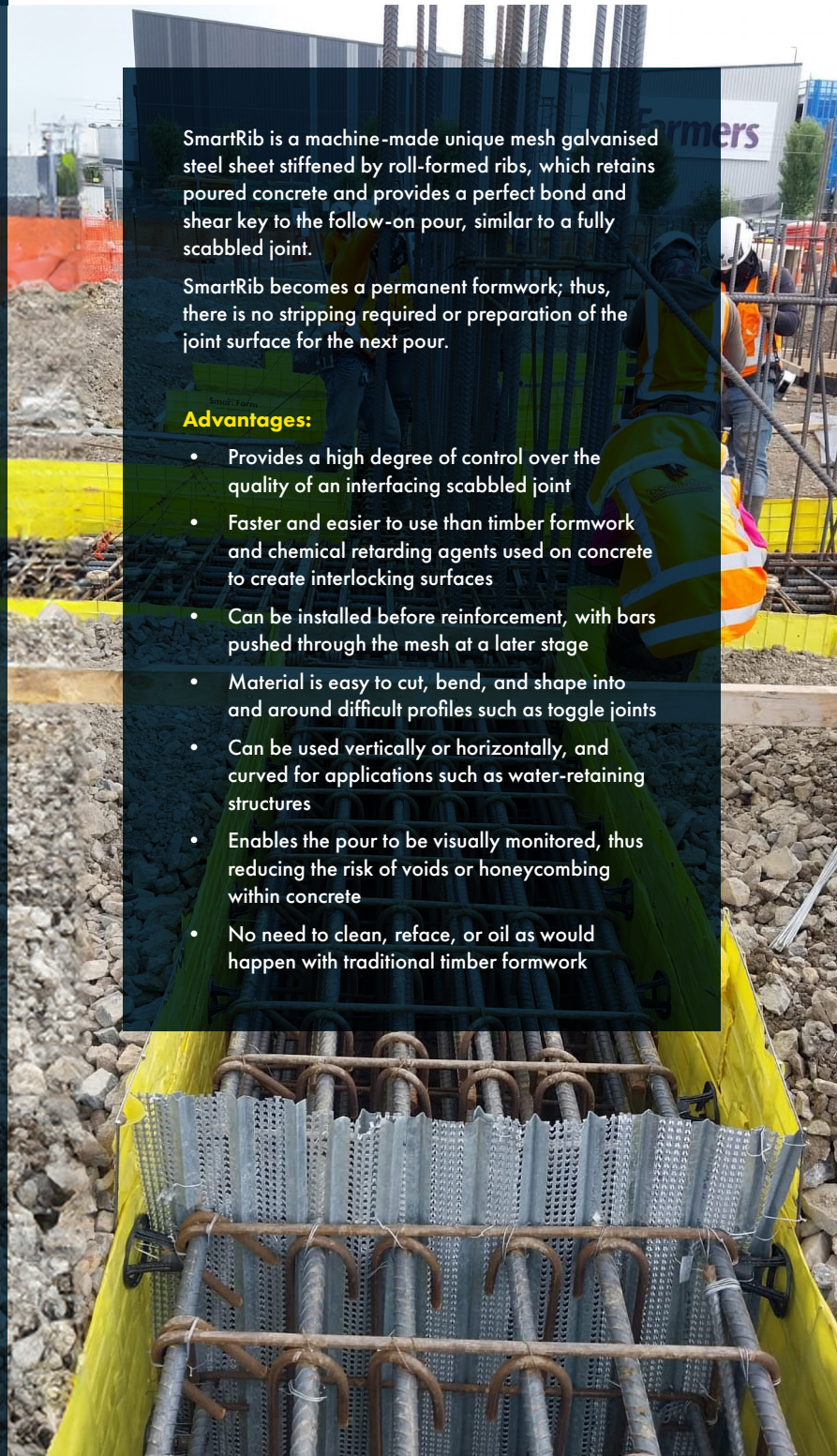
ORDER ONLINE POWERPAC.CO.NZ

SmartRib is a machine-made unique mesh galvanised steel sheet stiffened by roll-formed ribs, which retains poured concrete and provides a perfect bond and shear key to the follow-on pour, similar to a fully scabbled joint.

SmartRib becomes a permanent formwork; thus, there is no stripping required or preparation of the joint surface for the next pour.

Advantages:

- Provides a high degree of control over the quality of an interfacing scabbled joint
- Faster and easier to use than timber formwork and chemical retarding agents used on concrete to create interlocking surfaces
- Can be installed before reinforcement, with bars pushed through the mesh at a later stage
- Material is easy to cut, bend, and shape into and around difficult profiles such as toggle joints
- Can be used vertically or horizontally, and curved for applications such as water-retaining structures
- Enables the pour to be visually monitored, thus reducing the risk of voids or honeycombing within concrete
- No need to clean, reface, or oil as would happen with traditional timber formwork



I EXPANSION FOAM JOINT



SKU:	ROLL SIZE:
6190-FF10100	10mm x 100mm x 25m
6190-FF10150	10mm x 150mm x 25m
6190-FF10200	10mm x 200mm x 25m
6190-FF10300	10mm x 300mm x 25m
6190-FF1050	10mm x 50mm x 25m
6190-FF1075	10mm x 75mm x 25m
6190-FF20200	20mm x 200mm x 12.5m



COMPRESSIBLE & NON-ABSORBENT



EASILY CUT TO REQUIRED SIZE



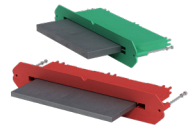
FUTURE-PROOF - WON'T ROT



RECOVERS AFTER COMPRESSION

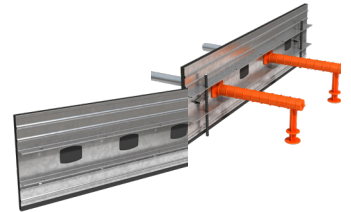
I CONNOLLY BISCUIT PLATE DOWEL

SKU:	LENGTH:	TYPE:
6193-CBPS6BLK	6mm	Black
6193-CBPS6HDG	6mm	HDG
6193-CBPS10BLK	10mm	Black
6193-CBPS10HDG	10mm	HDG



I CONNOLLY EXPANSION JOINT

SKU:	LENGTH:	TYPE:
6193-EXJ10030	100mm x 3m	Joint Only
6193-EXJ10030 SYSTEM	100mm x 3m	Joint System
6193-EXJ15030	150mm x 3m	Joint Only
6193-EXJ15030 SYSTEM	150mm x 3m	Joint System
6193-EXJ20030	200mm x 3m	Joint Only
6193-EXJ20030 SYSTEM	200mm x 3m	Joint System



I KEY JOINT

SKU:	KEY JOINT FOR:
6193-KJ10030	100mm Slab - 3m
6193-KJ15030	150mm Slab - 3m
6193-KJ20030	200mm Slab - 3m



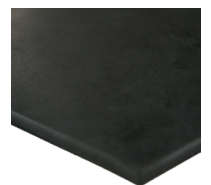
I CONNOLLY PEG & WEDGE SET 4 PACK

SKU:	TO SUIT:
6193-PW1004	100mm & 150mm Expansion Joint
6193-PW1504	To suit 200mm Expansion Joint



I BRIDGE BEARING RUBBER PADS

SKU:	SIZE:
6192-BB10150	10mm x 150mm per metre
6192-BB1020010	10mm x 200mm x 10m roll
6192-BB25100	25mm x 100mm per metre



I LOW FRICTION BEARING STRIP

SKU:	QTY:
LFBS502400	50mm x 2.4m
LFBS752400	75mm x 2.4m



PERSONNEL & SITE SAFETY
SITE SECURITY
TM/C SIGNAGE
ENVIRONMENTAL & CIVIL SUPPLIES
FORMWORK & ACCESSORIES
FASTENERS & ADHESIVES
CONCRETE FINISHING
CONCRETE VIBRATORS
GROUT MIX & PUMPING
PLANT & EQUIPMENT
CUTTING, DRILLING & GRINDING
HAND TOOLS
SURFACE PROTECTION
SITE LIGHTING
MATERIALS HANDLING
SITE SIGNAGE

I DOWELS

SQUARE MILL FINISH

SKU:	SIZE:	RECOMMENDED SLEEVE:
6193-DB16SQX450MM	16mm x 450mm	UDS16S x 230mm
6193-DB16SQX600MM	16mm x 450mm	UDS16S x 300mm
6193-DB20SQX450MM	20mm x 450mm	UDS20S x 230mm
6193-DB20SQX600MM	20mm x 450mm	UDS20S x 300mm



SQUARE GALVANISED

SKU:	SIZE:	RECOMMENDED SLEEVE:
6193-DBHGD16SQX450MM	16mm x 450mm	UDS16S x 230mm
6193-DBHGD16SQX600MM	16mm x 600mm	UDS16S x 300mm
6193-DBHGD20SQX450MM	20mm x 450mm	UDS20S x 230mm
6193-DBHGD20SQX600MM	20mm x 600mm	UDS20S x 300mm



ROUND MILL FINISH

SKU:	SIZE:	RECOMMENDED SLEEVE:
6193-DB12RX300MM	12mm x 300mm	EXJDS12R x 150mm
6193-DB16RX450MM	16mm x 450mm	UDS16R x 230mm
6193-DB16RX600MM	16mm x 600mm	UDS16R x 300mm
6193-DB20RX450MM	20mm x 450mm	UDS20R x 230mm
6193-DB20RX600MM	20mm x 600mm	UDS20R x 300mm
6193-DB24RX450MM	24mm x 450mm	UDS24R x 225mm



ROUND GALVANISED

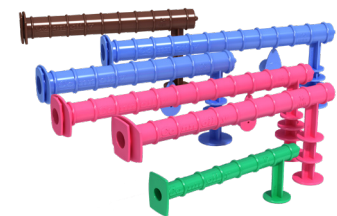
SKU:	SIZE:	RECOMMENDED SLEEVE:
6193-DBHGD12RX300MM	12mm x 300mm	EXJDS12R x 150mm
6193-DBHGD16RX450MM	16mm x 450mm	UDS16R x 230mm
6193-DBHGD16RX600MM	16mm x 600mm	UDS16R x 300mm
6193-DBHGD20RX450MM	20mm x 450mm	UDS20R x 230mm
6193-DBHGD20RX600MM	20mm x 600mm	UDS20R x 300mm
6193-DBHGD24RX450MM	24mm x 450mm	UDS24R x 225mm



I DOWEL SLEEVES

ROUND DOWEL SLEEVES

SKU:	DOWEL:	MOVEMENT:	MAX LENGTH:	QTY:
6193-EXJDS12R150MM	12 Round	End Expansion 13mm	300mm	90pk
6193-UDS16RX230MM	16 Round	End Expansion 18mm	450mm	100pk
6193-UDS16RX300MM	16 Round	End Expansion 18mm	600mm	100pk
6193-UDS20RX230MM	20 Round	End Expansion 18mm	450mm	100pk
6193-UDS20RX300MM	20 Round	End Expansion 18mm	600mm	100pk
6193-UDS24RX225MM	24 Round	End Expansion 13mm	450mm	100pk



SQUARE DOWEL SLEEVES

SKU:	DOWEL:	LATERAL MOVEMENT:	MAX LENGTH:	QTY:
6193-UDS16SQX230MM	16 Square	+/- 3mm	450mm	100pk
6193-UDS16SQX300MM	16 Square	+/- 3mm	600mm	100pk
6193-UDS20SQX230MM	20 Square	+/- 3mm	450mm	100pk
6193-UDS20SQX300MM	20 Square	+/- 3mm	450mm	100pk



PERSONNEL & SITE SAFETY
SITE SECURITY
TTC SIGNAGE
ENVIRONMENTAL & CIVIL SUPPLIES
FORMWORK & ACCESSORIES
FASTENERS & ADHESIVES
CONCRETE FINISHING
CONCRETE VIBRATORS
GROUT MIX & PUMPING
PLANT & EQUIPMENT
CUTTING, DRILLING & GRINDING
HAND TOOLS
SURFACE PROTECTION
SITE LIGHTING
MATERIALS HANDLING
SITE SIGNAGE

I FORM SEAL CLEAR SILICONE

SKU:	SIZE:	COLOUR:	QTY:
6190-NCS300T	300ml	Clear	20pk



I BLACK POLYTHENE DPM

SKU:	DIMS:	AREA:	THICKNESS:
44-BLACKPLAS	4m x 25m	100m ²	250 micron
44-BLACKPLAS-50	4m x 50m	200m ²	



I ORANGE POLYTHENE DPM

SKU:	DIMS:	AREA:	THICKNESS:
6190-OP425	4m x 25m	100m ²	300 micron

- Exposed UV rating - 30 day tested
- Recommended joining tape: 6133-PJT075023



I EXPANDING FOAM

STANDARD DISCHARGE EXPANDER FOAM

SKU:	PRODUCT:	SIZE:
20048	Aerosol Foam	750ml
2000224	Foam Cleaner	500ml



I BITUMEN BOARD

SKU:	DIMENSIONS:
BB122012	2.2m x 1.22m x 12mm



I DENSO PETROLATUM TAPE

SKU:	WIDTH:	LENGTH:
6133-DENSO50010	50mm	10m
6133-DENSO10010	100mm	10m
6133-DENSO15010	150mm	10m
6133-DENSO20010	200mm	10m
6133-DENSO30010	300mm	10m



CLICK & FIX EXPANDER FOAM

SKU:	PRODUCT:	SIZE:
20088	Foam Click & Fix	750ml
20107	Foam Cleaner	500ml
2000271	Expander Foam Gun	-



I TAPE

SKU:	TYPE:	WIDTH:	LENGTH:	THICKNESS:
6839	Grout Loss/Stop	12mm	15.2m	6.4mm
6133-DSCT1825	2 Sided	18mm	25m	
6133-DSCT2425	2 Sided	24mm	25m	
6421-5W	2 Sided	30mm	15m	4.8mm
6133-CT4830BL	Cloth Tape Blue	48mm	30m	
6133-CT4830YL	Cloth Tape Yellow	48mm	30m	
6133-PT4830BK	DPM Joiner Tape	48mm	30m	
6133-PJT075023	DPM Joiner Tape	75mm	23m	



MORE TAPES

Page 107

SCAN TO SEE ONLINE

SAFETY TAPES

Page 21

PERSONNEL & SITE SAFETY | SITE SECURITY | TMC SIGNAGE | ENVIRONMENTAL & CIVIL SUPPLIES | FORMWORK & ACCESSORIES | FASTENERS & ADHESIVES | CONCRETE FINISHING | CONCRETE VIBRATORS | GROUT MIX & PUMPING | PLANT & EQUIPMENT | CUTTING, DRILLING & GRINDING | HAND TOOLS | SURFACE PROTECTION | SITE LIGHTING | MATERIALS HANDLING

CONCRETE SLUMP KIT

SKU:

CSK

CONSISTS OF:

- 1x Slump cone
- 1x Slump tray
- 1x Tamping rod
- 1x Round nose scoop
- 1x 300mm Ruler
- 1x Screed
- 1x Brush



CONCRETE TESTING HAMMER

SKU:

280300

- MPA measurements device
- Mechanical type



QUICK-SET CONCRETE

SKU:

6300-FC20

WEIGHT:

20kg



FAIRING COAT

SKU:

RB 7.04-15

WEIGHT:

15kg



GROUT

SKU:

1970-GPGROUT20

WEIGHT:

20kg



REPAIR MORTAR

SKU:

RB 1.01-25

WEIGHT:

25kg



OX STAINLESS STEEL PRESSURE SPRAYER

SKU:

OX-P040713

CAPACITY:

13L

- Stainless steel tank
- Holster for wand & nozzle storage
- Flexible heavy-duty chemical-resistant hose
- 600mm stainless steel spray wand
- Wide mouth opening for easy filling and cleaning
- Ergonomic pump handle
- Stainless steel heavy-duty pump
- Superior lock-on trigger assembly



OX BACKPACK PRESSURE SPRAYER

SKU:

OX-P044715

CAPACITY:

15L

- Professional-quality manual backpack sprayer
- Tough polyethylene tank
- Viton-equipped seals for multiple liquid dispensing applications
- Fully adjustable and detachable padded shoulder harness
- Operating pressure: 0.2 – 0.4 MPa (30-58 psi)
- All-steel wand



DRUM PUMP

SKU:

200MBS55M63M69

- Suits 200L drum



I ADDITIVES

SKU:	QTY:	
BETOPRO WX-G		
RB 10.65 WX-G	20L	
BETONAMIT CRACKING AGENT		
RB9.01-5	5kg	
CF ACCELERATOR		
RB 6.11-20	20L	
CEMENT ACCELERATOR		
RB 6.21-20	20L	
CRETE-BLASTER (Non-Corrosive Cleaner)		
RB 10.14-5	5L	
RB 10.14EX-20	20L	
ECOMASK		
RB10.43-200	200L	
ECORATIO BETOPRO 570 WATER-BASED RELEASE AGENT		
RB 10.60-20	20L	
RB 10.60-200	200L	
EPOXY MORTAR SYSTEM (2 PART)		
RB 8.04-2	2L	
RB 8.04-8	8L	
RB 8.09-8	8L RMT Kit	
RB 8.04-20	20L	
EVAPORATION RETARDER		
RB 7.27-20	20L	
RB 7.27-200	200L	
FASTROCK ACCELERATED GROUT & CONCRETE		
RB 3.07	20L	
FORM RELEASE		
RB 7.18-20	20L	
RB 7.18-200	200L	
FORM-TARD PLUS		
RB 7.24-10	10L	
HYDROCHLORIC ACID 30%		
RB 10.10-20	20L	

SKU:	QTY:	
LATEX CONCENTRATE		
RB 7.15-5	5L	
MEMBRANE CURE		
RB 7.11-20	20L	
RB 7.11-200	200L	
RB7.11-1000	1000L	
PRIMER FOR STEEL		
RB 1.00-4	4kg	
RELEASE AGENT - BIO-LEASE		
RB 7.30-20	20L	
RB 7.30-200	200L	
REPAIR CONCRETE		
RB 1.06-25	25kg	
SLABCURE		
RB 7.10-20	20L	
RB 7.10-200	200L	
STEEL MOULD & EQUIPMENT PROTECTOR		
RB10.40-20	20L	
RB10.41-20	20L	
STYRO 100 - POLYSTYRENE RELEASE AGENT		
RB 10.68	20L	
SURFACE RETARDER		
RB 7.16-20	20L	
RB 7.17EX-20	Plus EXTRA - 20L	
RB 7.17EX-200	Plus EXTRA - 200L	
SURFACE RETARDER PLUS		
RB 7.17-20	20L	
RB 7.17-200	200L	
RB 7.24-20	20L	
SUPER-PLASTICISER		
RB 6.15-20	20L	
TARMAPRO 3000 PRECAST MOULD CLEANER		
RB10.69-20	20L	
TILT RELEASE (Concrete to Concrete Release Agent)		
RB 7.21-20	20L	

PERSONNEL & SITE SAFETY
SITE SECURITY
TTMC SIGNAGE
ENVIRONMENTAL & CIVIL SUPPLIES
FORMWORK & ACCESSORIES
FASTENERS & ADHESIVES
CONCRETE FINISHING
CONCRETE VIBRATORS
GROUT MIX & PUMPING
PLANT & EQUIPMENT
CUTTING, DRILLING & GRINDING
HAND TOOLS
SURFACE PROTECTION
SITE LIGHTING
MATERIALS HANDLING

I LUMICON

CONCRETE MATURITY LUMINODE - DATA LOGGER - TRANSMITTER

SKU:

6190-LNPDLT



SKU:

CABLE LENGTH:

LUMISENSE CONCRETE MATURITY SENSOR CABLE

6190-LS3

1m

6190-LS6

1.8m (6 Foot)



LUMISENSE PRO - STANDARD 2-SENSOR

6190-LSPS2S5L

1.5m

LUMISENSE PRO - SENSOR CABLE

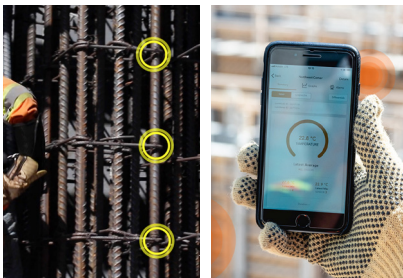
6190-LSPS2S7L

2.1m



CLOUD-BASED CONCRETE MATURITY MONITORING

- High accuracy concrete monitoring
- 24/7 reporting access & customised reporting
- Rugged & durable componentry
- Easy installation process



I LUMICON LUMIHUB

SKU:

6190-LHI

EACH LUMIHUB COMES WITH THE FOLLOWING STANDARD ACCESSORIES:

- Metal mounting brackets and fasteners
- Outdoor power supply with 100-foot (30m) Ethernet cable
- Instruction manual

LumiHub is purpose-built to operate outdoors in any type of environment. Its durable IP67-rated enclosure is dust-proof and water-resistant, ensuring constant reliability and dependability regardless of changes in weather conditions.



I NEVOSAFE REBAR SAFETY STRIP

STEEL REINFORCED LINER

SKU:

104094



- Suits rebar sizes 6mm - 20mm OD
- Comes in 1m strips

NON-REINFORCED

SKU:

104096



- Suits rebar sizes 6mm - 20mm OD
- Comes in 1m strips



I REOSOK - YELLOW

SKU:

6193-RS1220

QTY:

50pk

- Suits rebar sizes 12mm - 20mm OD



- UV-stabilised polypropylene

I REOSOK - ORANGE

SKU:

6193-RS2436

QTY:

50pk

- Suits rebar sizes 24mm - 36mm OD



I REBAR PROTECTION CAPS

SKU:

114013

REBAR SIZE:

6mm - 20mm OD

COLOUR:

Yellow

QTY:

40pk

114014

20mm - 36mm OD

Orange

30pk



I TIE WIRE

SKU:

6190-TWR

TYPE:

Reel

SIZE:

1.6mm x 95m

QTY:

1

6190-WR1695

Wire

1.6mm x 95m

1.5kg roll

199137-9

Wire

0.8mm x 100m

50pk



I TIE WIRE BUNDLES

SKU:

6190-W300A

TYPE:

Straight

SIZE:

1.6mm x 300mm

QTY:

20kg

6190-W400A

Straight

1.6mm x 400mm

20kg

WT110B/2000

Loops

1.6mm x 110mm

2000 ties

WT200B/2000

Loops

1.6mm x 200mm

2000 ties

WT340B/1000

Loops

1.6mm x 340mm

1000 ties



I WIRE TWISTER

SKU:

OX-T230231

SIZE:

310mm

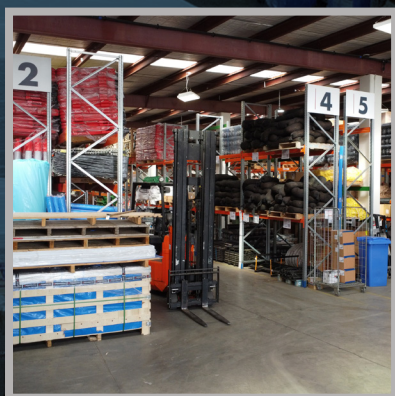
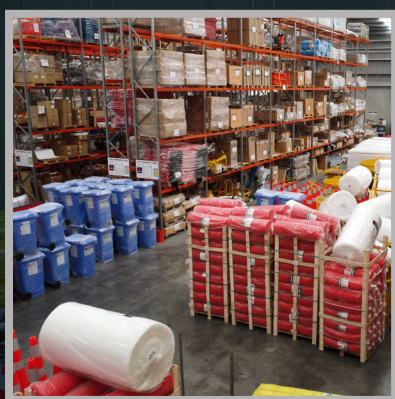


PERSONNEL & SITE SAFETY
SITE SECURITY
SITE SIGNAGE
TTC SIGNAGE
ENVIRONMENTAL & CIVIL SUPPLIES
FORMWORK & ACCESSORIES
FASTENERS & ADHESIVES
CONCRETE FINISHING
CONCRETE VIBRATORS
GROUT MIX & PUMPING
PLANT & EQUIPMENT
CUTTING, DRILLING & GRINDING
HAND TOOLS
SURFACE PROTECTION
SITE LIGHTING
MATERIALS HANDLING
SITE SIGNAGE

WE HAVE STOCK AVAILABLE

Powerpac Group is New Zealand's
Construction Supply Specialist.

We've Provided Quality Construction
Equipment & Consumables Since 1976.



AUCKLAND
82 McLaughlins Rd, Wiri



WELLINGTON
3 Mohuia Cres, Porirua



CHRISTCHURCH
115 Hayton Rd, Wigram



Order Online
POWERPAC.CO.NZ