

NOV - JAN EDITION 2024

POWERPAC SOLUTIONS

SEE PAGE
12 FOR
MORE
DETAILS

ULTIMATE SUMMER



Giveaways when you order with Powerpac Online*

AUCKLAND | WELLINGTON | CHRISTCHURCH
0800 23 57 89 POWERPAC.CO.NZ

Site Establishment



Site Security Fencing

PPE & First Aid

Site Signage & Branding

Formwork & Civil



Formwork

Formwork Accessories

GFRP

Sediment Control

Interior Protection



Floor & Wall Protection

Dust Barrier Kits

Tape

Material Handling



Concrete & Conical Skips

Goods Cages

Crane Forks

POWERPAC Your direct to
SITETAXI Site Delivery
Service

Same day delivery when you order
before 9am



SITE ESTABLISHMENT



Pedestrian Traffic Barrier

2.2m(L) x 1.2m(H)
Hi-Vis Orange
Ground clearance gap: 85mm

\$130.00

SKU: 6174-SPB



Interconnect-able
Reflective stripes
Heavy-duty swivel feet
Excellent stability
Easy to use, handle & store

**NEW
PRODUCT**

Pedestrian Control Barriers

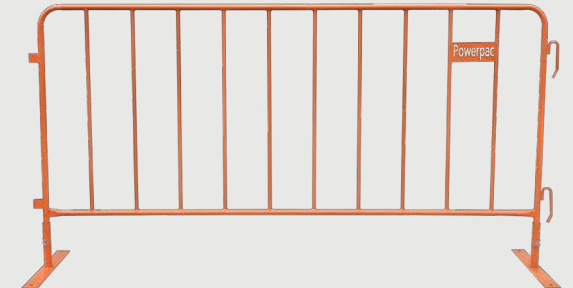
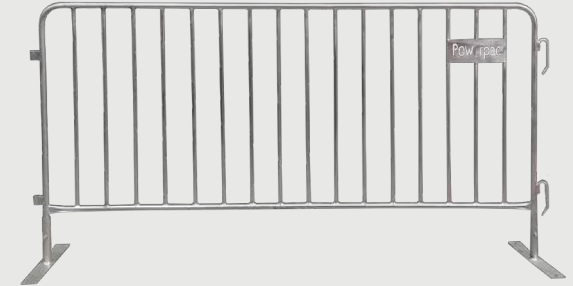
2.2m(L) x 1.1m(H)
Barrier Height: 880mm
Foot Height: 300mm

Galvanised
\$79.00

SKU: 6101-PCBG2212

Orange powder coat
\$85.00

SKU: 6101-PCBO2212



Traffic Control Barriers

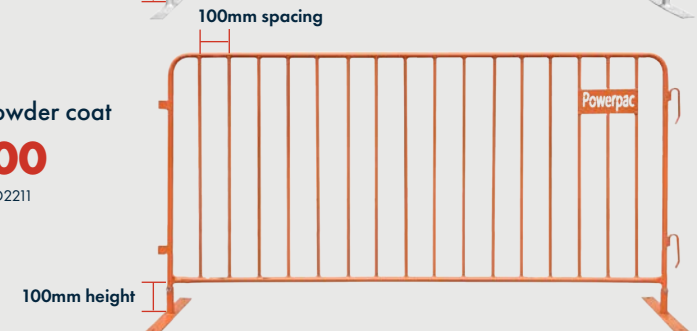
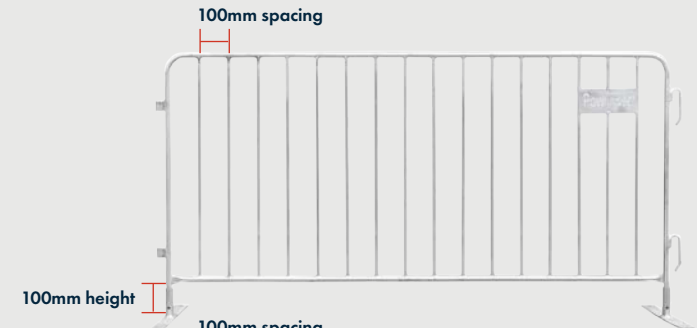
2.2m(L) x 1.1m(H)
Barrier Height: 1000mm
Foot Height: 100mm

Galvanised
\$90.00

SKU: 6101-TCBG2211

Orange powder coat
\$90.00

SKU: 6101-TCBO2211



SITE SECURITY PERIMETER FENCING



Temporary Fence Panel

\$85.00

SKU: TF-242132



Clamp

\$6.00

SKU: TF-CLAMP32



Foot

\$24.00

SKU: TF-FOOT32



Brace

\$39.00

SKU: TF-BRACE32

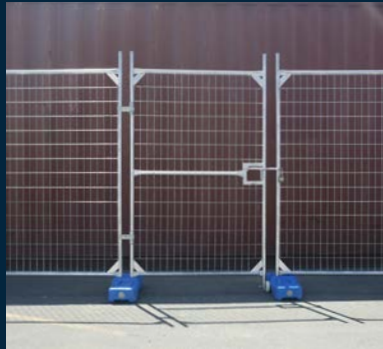


Fence Panel with Gate

2.4m(W) x 2.1m(H)
Galvanised

\$140.00

SKU: 6101-PAG



Single Panel Access Gate

1.2m(W) x 2.1m(H)
Galvanised

\$95.00

SKU: 6101-PG



Vehicle Access Gate

2.4m(W) x 2.1m(H) x 2
Galvanised

\$390.00

SKU: 6101-VAG



PVC Mesh Banner - Custom Branded



2.4m x 1.8m

\$80.00 each

SKU: MESHBANNER200

BRANDED SCRIM

WE OFFER FREE DESIGN & SETUP

1.6m x 50m

\$650.00 per roll

1.8m x 50m

\$750.00 per roll

BULK PRICING

5+ Rolls @ **\$625.00** per roll

10+ Rolls @ **\$590.00** per roll

20+ Rolls @ **\$550.00** per roll

5+ Rolls @ **\$725.00** per roll

10+ Rolls @ **\$700.00** per roll

20+ Rolls @ **\$650.00** per roll



REINFORCED WELDED EDGE TO EDGE



SEE YOUR PARTNER RATE

Log into Powerpac Online or speak with your Rep

SITE SAFETY

Your 7 in 1 Mobile Site Safety Station

600mm(W) x 1400mm(H) x 400mm(D)



- COVER
- PERSONALISED BRANDING (Sticker: 250mm x 600mm)
- FIRST AID KIT
- EYEWASH KIT
- AIR HORN
- FIRE EXTINGUISHER
- DOCUMENT STORAGE BOX
- SPILL KIT

PVC heavy-duty rain cover available as required

With Cover
\$1,400.00
SKU: MSS50

No Cover
\$1,200.00
SKU: MSS50-NC

ONLY 25kg



PPE

Powerpac Safety Glasses from **\$3.50**



SKU: 619-HC200C (CLEAR)

SKU: 619-P802C (CLEAR)

SKU: 619-P802S (SMOKE)

Cut5 Rated Gloves from **\$11.00**

SKU: 6161-CUT5



Gripper Safety Gloves from **\$3.46**
SKU: 6161-GRIPPER
Nitrile dipped palms for extra grip



Disposable Nitrile Gloves 100pk **\$29.00**
SKU: MDNHD-L

Glove Grip-Clip **\$6.90**
SKU: GCG

Powerpac First Aid Kit

50 Person

\$125.00
SKU: 6162-FAKPC50



SCAN TO SEE WHAT'S INSIDE



Universal Spill Kits

Supplied with high absorbency pads and socks



Vehicle Kit **\$125.00**
SKU: 617-SSK025UV



240L **\$620.00**
SKU: 617-SSK240UV

Powerpac Eyewash Kit

2x 500ml bottles of eyewash solution

Wall bracket included
Easy Installation



\$75.00
SKU: 6162-EWK500

TRAFFIC MANAGEMENT

Construction Cones

Height: 900mm
4.5kg
NZTA Compliant



SKU: 6174-CC900

SKU: 6174-CC900BL

1-10	11-20
\$29.00	\$27.00
21-50	50+
\$25.00	\$22.00

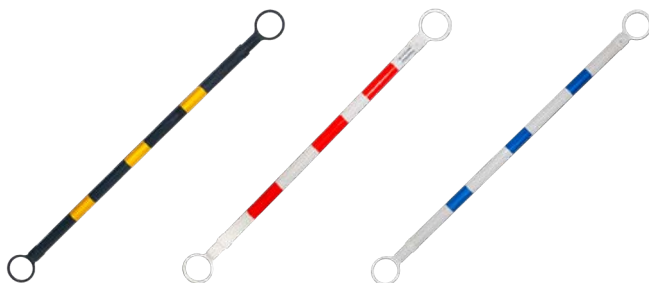
Barrier Arms

1320mm - 2160mm
Reflective
Will fit any cone size

Yellow & Black
\$12.00
SKU: 6174-TCBYB

Red & White
\$15.00
SKU: 6174-TCBRW

Blue & White
\$20.00
SKU: 6174-TCBB

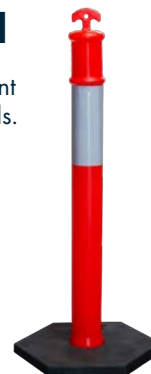


Portable T Top Bollard

Designed for easy gripping and convenient wrapping of barrier tape between bollards.

1.1m High
6kg Rubber Base

\$50.00
SKU: 6174-TTBL



Flexible Bollards

1000mm High
Reflective stripe
UV Resistant

\$95.00
SKU: 6174-FB1000RB



750mm High
Removable Base

\$50.00
SKU: 6174-FB750RB



Ground Protection Mat

Powerpac's ground protection mats provide a durable, reusable solutions for creating roadways on unstable terrains such as mud, sand, or soft grounds.

It supports up to 80 tonnes, is easy to handle and maintain, and is particularly effective for protecting turf during landscaping, without the need for heavy lifting equipment.

2.44m x 1.2m
13mm thick

\$230.00
SKU: 6174-GPM



Rope handles for handling



SEE YOUR PARTNER RATE

Log into Powerpac Online or speak with your Rep

SEDIMENT CONTROL

Silt Sock / EnviroLog



SKU:	SIZE:	PRICE:
6171-SS12	1000mm x 250mm	\$11.00
6171-SS12F	1000mm Sand Filled	\$22.00
BIO SOCK4MT	4m x 300mm	\$110.00

Safety Caps



SKU:	QTY:	PRICE:
SCY100	100pcs per pack	\$45.00

Suits 12-32mm dia rebar star poles and Y posts

Waratah Posts



SKU:	SIZE:	BUNDLE:	PRICE:
26-450SP	450mm	10	\$4.50
26-600SP	600mm	10	\$5.00
26-900SP	900mm	10	\$6.00
26-150SP	1500mm	10	\$7.00
26-180SP	1800mm	10	\$11.50

Wire



SKU:	TYPE:	QTY:	PRICE:
6171-LTW31525	Low Tensile	25kg	\$120.00
6171-HTW2525	High Tensile	25kg	\$150.00



COCONUT MATTING

Material: 100% mattress-grade coir
Mass/unit area: Approx. 300 g/m²
Thickness: 5mm

STANDARD
\$245.00

SKU: 6171-CCM300

WITH JUTE NETTING
\$340.00

SKU: 6171-CCJM300



Waratah Posts



SKU:	SIZE:	BUNDLE:	PRICE:
26-450SP	450mm	10	\$4.50
26-600SP	600mm	10	\$5.00
26-900SP	900mm	10	\$6.00
26-150SP	1500mm	10	\$7.00
26-180SP	1800mm	10	\$11.50

Wire



SKU:	TYPE:	QTY:	PRICE:
6171-LTW31525	Low Tensile	25kg	\$120.00
6171-HTW2525	High Tensile	25kg	\$150.00

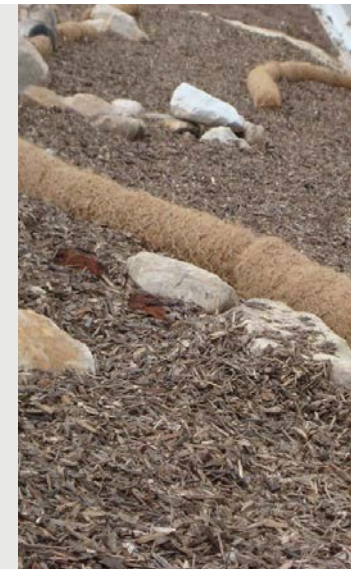
COIR LOGS

300mm Dia x 3m roll 300gsm

Suitable for bank and shoreline stabilisation
Supports vegetation growth
Silt control
Water diversion

\$165.00

SKU: 6171-CL30300



ENVIRONMENTAL & CIVIL SUPPLIES

Storm Water Sump Filter

1220mm x 910mm x 460mm
Holds up to 18kg of silt sediment

\$140.00

SKU: 6171-DG

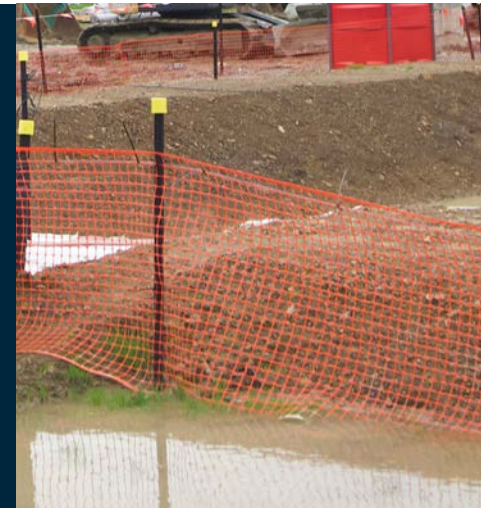


Safety Barrier Mesh

900mm x 30m
Extruded plastic
Self standing

\$65.00

SKU: 6171-BM0930



Silt Fence

Standard
1200mm x 50m roll
100gsm
UV-resistant

\$48.00

SKU: 6171-SF1250

Super
1200mm x 50m roll
Double Layer 100gsm
UV-resistant

\$95.00

SKU: 6171-SSF1250



Bunting Flags

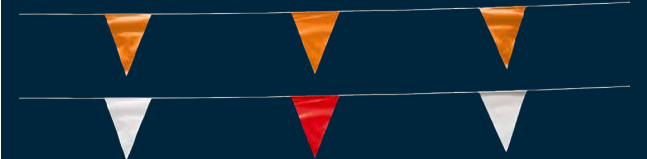
30m
40 per carton

Orange
\$18.00

SKU: BUN30-ORANGE

Red & White
\$15.00

SKU: BUN30-RED/WHITE



Ground Staples

130mm x 3mm

\$33.90

200pk
SKU: 6171-GS130HT

230mm x 3mm

\$45.00

200pk
SKU: 6171-GS230HT

300mm x 6mm

\$95.00

200pk
SKU: 6171-GSHD300



Super Silt Fence Wire Mesh

1m x 50m roll
1.5mm galv wire



\$135.00

SKU: 6171-SSFWIRE



SEE YOUR PARTNER RATE

Log into Powerpac Online or speak with your Rep

FORMWORK PLY

Formply F17 Grade

SKU:	SIZE:	PRICE:
6190-FPF171812	1800mm x 1200mm x 17mm	\$79.00
6190-FPF172412	2440mm x 1220mm x 18mm	\$95.00



54 sheets per pack

Hardwood Formply

SKU:	SIZE:	PRICE:
6190-FP241218	2440mm x 1220mm x 18mm	\$69.00
6190-FP241225	2440mm x 1220mm x 25mm	\$134.00

Dark brown phenol film
Hardwood non-durable
Exterior glue bond



AVAILABLE IN STOCK

NEW PRODUCT!

Flexi Formply

2440mm x 1220mm x 9mm
2-sided film faced
Hardwood, non-durable
Exterior glue bond

\$95.00

SKU: 6190-FP241209

Composite Formply

Waterproof, will not deform or warp when used in damp environment.

Good strength and flexibility, edges and corners will not break or fracture.

Re-use more than 50 times

No release agent required

SKU:	SIZE:	PRICE:
6193-CFP241215	2440mm x 1220mm x 15mm	\$140.00
6193-CFP241218	2440mm x 1220mm x 18mm	\$155.00



SMARTFORM

Sacrificial Formwork System

Speed up your formwork project with Smartform



- Rapid Install & Build Time
- Supplied in Modular & Pre-formed Profiles
- Reduced Cost & Labour

SKU: 6193-SF



PILE CAGE SPACERS

- Each bag contains 30 spacers
- Suits bar: 16mm - 20mm

HD 50mm Cover

\$95.00

SKU: 6192-HDS5020

HD 65mm Cover

\$106.00

SKU: 6192-HDS6520

HD 75mm Cover

\$110.00

SKU: 6192-HDS7520



ASK US ABOUT OUR BULK RATES



Plastic Ground Chairs

SKU:	BAR HEIGHT:	MESH HEIGHT:	QTY:	PRICE:
G25/40	25mm	40mm	100pk	\$29.00
G50/65	50mm	65mm	100pk	\$30.00
G75/90	75mm	90mm	100pk	\$36.00
6192-G85/100	85mm	100mm	100pk	\$48.00
G150/160	150mm	160mm	50pk	\$150.00



Black DPM Polythene

4m x 25m Roll

\$95.00

SKU: 44-BLACKPLAS

4m x 50m Roll

\$189.00

SKU: 44-BLACKPLAS-50



Orange DPM Polythene

- 4m x 25m
- 100m²
- 300 micron

\$190.00

SKU: 6190-OP425



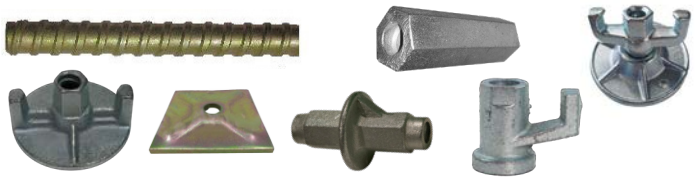
SEE YOUR PARTNER RATE

Log into Powerpac Online or speak with your Rep

Contact us for bulk pricing

All prices exclude GST & Freight

www.powerpac.co.nz



Z Bar Accessories

SKU:	PRODUCT:	SIZING:	QTY:	PRICE:
6193-TR153000	Z Bar	15mm	3m length	\$60.00
6193-TRN15	Z Bar Plate Nut	110mm	1	\$21.00
6193-TBJ15100	Tie Bar Joiner	100mm	1	\$15.00
6193-ZBWN15	Z Bar Nut - Single Wing	55mm	1	\$15.00
6193-ZFP121210	Z Bar Flange Plate	120mm	1	\$18.00
6193-WSJ	Z Bar Waterstop Joiner	110mm	1	\$22.00
6193-TRPN	Pivot Plate Nut for Tie Bar	15mm x 100mm	1	\$28.00



Tie Wire

SKU:	TYPE:	SIZE:	QTY:	PRICE:
6190-W400A	Bundle	400mm	1kg	\$4.99
6190-WR1695	Coil	1.6mm x 95m		\$6.90
6190-W300A	Bundle - Galv	300mm	1kg	\$4.90



Powerpac Tie Wire Reel

Suits all types of tie wire
Left or right hand use
Fits any standard belt

\$65.00

SKU: 6190-TWR

DURABAR - GFRP Rebar

10mm Straight Rebar

- Stronger and lighter than steel
- ¼ weight of a steel bar of the same diameter
- Non-corrosive and non-conductive
- Bond strength of 10 MPa, allowing for shorter lapping length
- Labour reduced by 2x – 3x

\$10.80 per 5.8m length

SKU: 6193-DB1045



GFRP Tie Bar & Accessories

Glass fibre-reinforced polymer Form Ties ensures corrosion resistance, faster cutting process, easier transportation in conventional formwork, single-sided formwork, columns, and similar applications.

GFRP Form Tie

16mm Dia x 3m

\$75.00

SKU: 6193-GFRPR



Form Tie Nut

65mm Washer Face Dia
75mm Length

\$18.00

SKU: 6193-GFRPTN



¼ the weight of steel
Thread profile strength
Reusable nut

CONCRETE VIBRATOR KIT

- Head Sizes: Ranging from 25-65mm
- Shaft lengths to suit 25mm Head: 1, 2 & 4m
- Shaft lengths to suit 35-65mm Head: 0.5-9m
- Modular, flexible system can be tailored to meet your requirements



4m SHAFT & 35mm HEAD

4m SHAFT & 55mm HEAD

\$3,475.00

\$3,575.00

SKU: 5100009717.KIT35

SKU: 5100009717.KIT65

Formatube - Column Formwork

Formatube is a lightweight and cost-effective fibre form designed to provide a fast, versatile method for pouring concrete columns and round voids. They promise easy handling and rapid setup without the fuss of cleaning or heavy lifting.

- F3-Grade Finish

SKU:	SIZE:	PRICE:
619-FT300X3	3000mm x 296 Ø	\$149.40
619-FT400X3	3000mm x 406 Ø	\$244.80
619-FT450X3	3000mm x 457 Ø	\$282.60
619-FT500X3	3000mm x 508 Ø	\$342.00
619-FT610X3	3000mm x 610 Ø	\$385.20



Concrete Spacer Blocks

SINGLE COVER



SKU:	COVER:	QTY:	PRICE:
6192-CSAS50	50mm	100pk	\$45.00
6192-CSAS60	60mm	100pk	\$45.00
6192-CSAS75	75mm	100pk	\$65.00
6192-CSAS100	100mm	50pk	\$50.00



FAST CLIP

SKU:	COVER:	QTY:	PRICE:
6192-CSAK30	30mm	250pk	\$125.00
6192-CSAK40	40mm	200pk	\$130.00
6192-CSAK50	50mm	150pk	\$130.00



HIGH LOAD

SKU:	COVER:	QTY:	PRICE:
6192-CSAH50	50mm	50pk	\$45.00
6192-CSAH60	60mm	50pk	\$75.00
6192-CSAH75	75mm	25pk	\$45.00



CONCRETE MULTI SPACER

SKU:	COVER:	QTY:	PRICE:
6192-AS3550	35, 40, 45, 50mm	200pk	\$85.00
6192-AS2025	20, 25mm	200pk	\$50.00



CONCRETE MULTI SPACER BAR

SKU:	COVER:	LENGTH:	PRICE:
6192-CSB755090	75/50mm	900mm	\$14.90



SEE YOUR PARTNER RATE

Log into Powerpac Online or speak with your Rep

Contact us for bulk pricing

All prices exclude GST & Freight

www.powerpac.co.nz

BRUTE BOARD

HIGH IMPACT PROTECTION BOARD

- | BONDED FELT BACKING
- | ABRASION RESISTANCE
- | ANTI-SLIP - PREVENTS HAZARDS



3mm Brute Board

2200mm x 1200mm
Orange

Suited to light-traffic areas or any vertical surface protection.

\$32.00

SKU: 6131-BB221203



5mm Brute Board

2200mm x 1200mm
Yellow

Heavy-traffic rated protection. Ideal for protecting from EWP, forklifts, etc.

\$49.00

SKU: 6131-BB221205



CORFLUTE

PROTECTION



Protects:



Corflute Protection Sheet

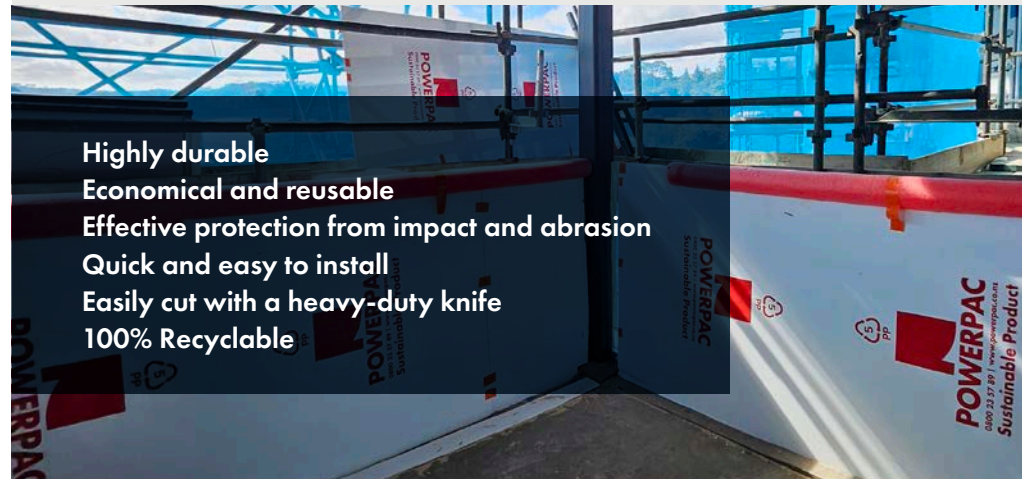
Corflute can provide a degree of impact protection for almost any surface. The fluted construction allows the board to be cut and shaped without losing strength.

2.2m x 1.2m sheet – 450gsm 3mm thick
Supplied in 20 pack

\$12.00 per sheet
SKU: 6131-CF221203

2.2m x 1.2m sheet – 950gsm 5mm thick
Supplied in 10 pack

\$16.00 per sheet
SKU: 6131-CF221205



- Highly durable
- Economical and reusable
- Effective protection from impact and abrasion
- Quick and easy to install
- Easily cut with a heavy-duty knife
- 100% Recyclable

CARDBOARD FLOOR PROTECTION BOARD

- Moisture resistant
- Reusable and economical
- Effective protection from impact and abrasion
- Quick and easy to install
- No sawing may be cut with a heavy duty knife
- 100% Recyclable



28.95m²
965mm x 30m
\$95.00

SKU: 6131-BB30

BULK PRICING

- 1 - 5 Rolls @ **\$95.00** per roll
- 6 - 9 Rolls @ **\$85.00** per roll
- 10+ Rolls @ **\$75.00** per roll



TAPE PRODUCTS

Cloth Tape
48mm x 30m
Blue

\$12.00

SKU: 6133-CT4830BL

30 per carton



Low Tac Tape
55mm x 48m
Orange

\$12.00

SKU: 6133-LT4855OR

30 per carton

Cloth Tape
48mm x 30m
Yellow

\$16.00

SKU: 6133-CT4830YL

30 per carton



ULTIMATE SUMMER



FREE WEBER BABY Q

when you spend \$5000+ with Powerpac Online*



FREE 22L ICEY-TEK CHILLY BIN

when you spend \$2500+ with Powerpac Online*



FREE POLARISED SUNNIES

when you spend \$500+ with Powerpac Online*

*One item per online order that meets value threshold. Pricing thresholds are exclusive of NZ GST. Offer valid from 1/11/24 to 20/12/24

For all terms see www.powerpac.co.nz/summer24

MATERIAL HANDLING

Column Skips

High performance concrete skip with 2m x 200mm rubber hose

- D Rings for Rigging connection
- Designed to lay down to assist filling
- When lifted it returns to its vertical position

Weight: 300kg
Capacity: 2600kg

\$9,500.00

SKU: BC-99A

Weight: 745kg
Capacity: 5200kg

\$13,100.00

SKU: BC-200A



Conical Skips

- With rubber hose and spring lever operated gate

Weight: 120kg
1050mm W x 1250mm H

\$4,900.00

CAPACITY: 500L

SKU: CT-50N

Weight: 175kg
1250mm W x 1490mm H

\$6,500.00

CAPACITY: 800L

SKU: CT-80N



Standard rubber hose
200mm Ø

Goods Lifting Cage with Ramp

CAPACITY: 2000KG
Weight: 185kg
1346mm W x 1154mm H

\$3,900.00

SKU: CST-D



Crane Fork

CAPACITY: 2000KG
Weight: 140kg
Height: 2400mm

\$2,900.00

SKU: MBA-20A

CAPACITY: 3000KG
Weight: 175kg
Height: 2400mm

\$3,900.00

SKU: MBA-30A



NEW PRODUCTS



Heavy Traffic Cable Protector

950mm x 500mm x 45mm
 Suitable for heavy vehicles
 30 Ton Rating
 5 Channels

5 Channel Cable Protector
\$110.00

SKU: 6180-CC9050

5 Channel Corner Profile
\$55.00

SKU: 6180-CC9050CNR

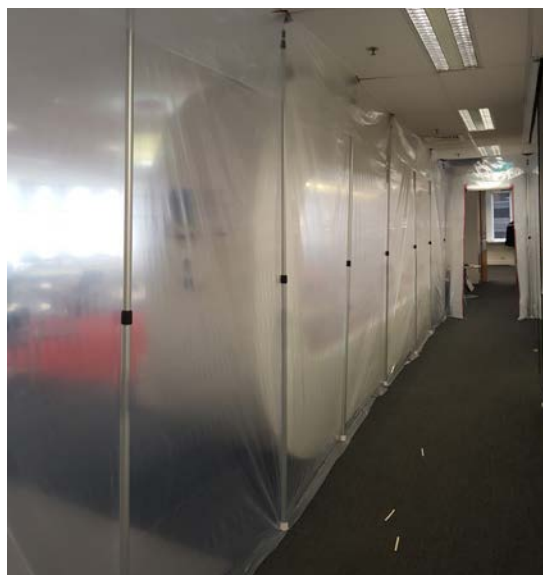


Dust Barrier Pole Kit

6x 1.2m - 3.8m Extendable poles
 2x Zips
 2x 1.2m Foam Rails
 1x Carry Bag

\$550.00

SKU: 6132-SSDBKIT6



Bulk Bags

600mm x 600mm x 900mm
 Heavy-duty weave
 4x sewn-in handles
 Duffel top
 UV Protectants

Capacity: 2600kg

\$25.00

SKU: 6130-BB6090



660L Rotating Wheelie Bin

784mm D x 1370mm W x 1215mm H
 Sturdy HDPE 45kg Body
 Durable Steel Base 35kg

\$1299.00

SKU: 6162-WB660RB



Air Scrubber HEPA

2 stage Filter
 Filter 1 : Carbon Filter
 Filter 2: Hepa H13 Filter

\$1150.00

SKU: 2710-AS750